

**SAN ANTONIO RIVER AUTHORITY  
TEXAS**

**EXECUTIVE SUMMARIES  
FIVE YEAR SERVICE & FINANCIAL PLAN  
Fiscal Years 2010 - 2014**

Presented to the  
Board of Directors

<u>Name</u>	<u>Title</u>	<u>County</u>
Názirite Rubén Pérez		Bexar County, District 1
Roberto G. Rodriguez	Executive Member	Bexar County, District 2
Jeff Neathery		Bexar County, District 3
Thomas G. Weaver	Chairman	Bexar County, District 4
Sara M. Buchanan	Secretary	Bexar County, At Large
Hector Morales		Bexar County, At Large
Adair R. Sutherland	Vice-Chairman	Goliad County
Terry E. Baiamonte		Goliad County
Gaylon Oehlke	Treasurer	Karnes County
H. B. Ruckman, III		Karnes County
A. D. Kollodziej, Jr.	Executive Member	Wilson County
John Flieller		Wilson County

Management

<u>Name</u>	<u>Title</u>
Suzanne B. Scott	General Manager
Stephen T. Graham	Assistant General Manager
Steven J. Raabe	Director of Technical Services
Susan K. Eason	Director of Internal Resources
John A. Chisholm III	Director of Operations
Larry O. Anderson	Director of Support Services
Mike Gonzales	Deputy Director of Technical Services
Al Astran	Utilities Manager
James Blair	Watershed Operations Manager
Jim Boenig	Engineering Manager
Dale Bransford	Park Services Manager
Rudy Farias	Water Resources & Community Development Manager
Nefi Garza	Watershed Management Manager
Art Herrera	Information Technology Manager
Claude Harding	Real Estate Manager
Steve Lusk	Environmental Sciences Manager
Sharon McCoy-Huber	Financial Services Manager
Steven Schauer	External Communications Manager

**SAN ANTONIO RIVER AUTHORITY  
TABLE OF CONTENTS  
EXECUTIVE SUMMARIES 2009/10**

Budget Message .....	1
Organizational Chart.....	10
Summary - All Funds.....	11
Graphs .....	12

**General Fund**

Summary .....	15
Property Taxes .....	16

**Programs**

Total Program Funds by Funding Source .....	17
2009/10 Program Funds by Funding Source .....	17
Total Funding by Program .....	18

**Other Information**

Personnel.....	19
Debt Schedules	
San Antonio Channel Improvement Bonds Debt Schedules .....	20
Martinez and Salatrillo Revenue Bonds Debt Schedules .....	22
SARA Public Facilities Corporation.....	23

**Five Year Service & Financial Plan  
Fiscal Years 2010-2014**

Financial Information.....	24
Five Year Plans	
General Fund.....	25
SARA Wastewater System Fund .....	27
SARA Water System Fund .....	28
Parks Services Fund.....	29



SAN ANTONIO  
RIVER AUTHORITY

Water Brings Us Together

May 20, 2009

To the San Antonio River Authority Board of Directors:

In accordance with the provisions of Article VI, Section 2, of the Bylaws of the San Antonio River Authority (River Authority), submitted herewith for your consideration is the Annual Budget for fiscal year 2009/10 for the period July 1, 2009 to June 30, 2010.

The proposed fiscal year 2009/10 budget is reflected in three volumes to address the different needs of the reader(s). The first book is the Executive Summaries and Five Year Service & Financial Plan. The second book is the Annual Budget Detail; this reports the detail breakdown of all River Authority funds. The third book is Program Budgets; this explains to the reader the projects the River Authority is currently active or anticipated to be involved in.

The proposed fiscal year 2009/10 budget continues to support the advancement of projects, programs and efforts by programmatic area to better link the River Authority's expenditures to the approved organizational mission, goals and objectives as approved by the Board of Directors in January 2008 and refined during the past fiscal year.

**Strategic Planning**

The following mission statement was adopted on September 19, 2001 by the Board of Directors:

“The San Antonio River Authority is entrusted to protect and preserve our shared water resources and, together with our partners, pursue innovative solutions that will serve generations to come.”

The mission statement recognizes the River Authority is entrusted by the State of Texas and the River Authority's constituents to protect the water resources in the district, our job is to protect and preserve the water in the district and the environment it supports, we share our water resources with others who depend upon them, we are more effective when we work in partnerships with others and we want to be creative and innovative as we think about long term solutions to water related problems in our district.

Since 2001, the Board of Directors and Staff have engaged in strategic planning activities to determine goals, objectives and initiatives aimed at successfully achieving the organizational mission.

EXECUTIVE  
COMMITTEE



CHAIRMAN  
Thomas G. Weaver

VICE CHAIRMAN  
Adair R. Sutherland

SECRETARY  
Sally Buchanan

TREASURER  
Gaylon J. Oehlke

MEMBER AT LARGE  
A.D. Kollodziej, Jr.  
Roberto G. Rodriguez



BOARD OF DIRECTORS

BEXAR COUNTY  
DISTRICT 1  
Náizinte Rubén Pérez

DISTRICT 2  
Roberto G. Rodriguez

DISTRICT 3  
Jeff Neathery

DISTRICT 4  
Thomas G. Weaver

AT LARGE  
Sally Buchanan  
Hector R. Morales

WILSON COUNTY  
John Flieller  
A.D. Kollodziej, Jr.

KARNES COUNTY  
Gaylon J. Oehlke  
H.B. Ruckman III

GOLIAD COUNTY  
Terry E. Baumonte  
Adair R. Sutherland



GENERAL MANAGER  
Suzanne B. Scott

The River Authority primary service areas have been defined as:

- Water Resources
- Water Quality
- Flood Control
- Parks
- Utilities (Water and Wastewater)
- Economic Development

The board has focused policy decisions on the growth of the River Authority's service and resources requirements; the capability of the River Authority's taxing authority and governing statute to respond to future service demands; advancing of environmental stewardship of the watersheds in the basin; promoting appreciation for the river and tributaries by enhancing recreational accessibility and enjoyment and restoring degrading ecosystems; expansion of the utility system to support economic development and to continue to shape the expertise of the River Authority staff to effectively meet the needs of the communities within the district.

### **Linking Goals to Programs and Projects**

*“A great organization is one that delivers superior performance and makes a distinctive impact over a long period of time,”*

*Jim Collins, author Good to Great.*

The River Authority has embraced a philosophy to focus the agency on achieving sustained superior performance by directing our services and expertise where the River Authority can provide the greatest value. Last year five goals, objectives and performance areas listed below were established and will be maintained for the fiscal year 2009/10 budget year.

#### **Goal 1: Exemplify environmental leadership, stewardship and expertise**

1. *Leading by example:*
  - Reduce our use of energy, water and supplies by 10%.
  - Increase recycling efforts.
2. *Applying our specialized knowledge as environmental stewards:*
  - Identify and develop a geo-referenced database of impaired aquatic and riparian zones throughout the basin and establish a prioritized action plan for restoration.

#### **Goal 2: Enhance community appreciation for the environmental resources of the San Antonio River and its tributaries.**

1. *Enhancing community respect and value of the river and tributaries:*
  - Reduce sources of pollution in the basin's waterways.
  - Develop an action plan and timeline to have targeted stream segments consistently meeting state stream standards, including contact recreation, within five years.
2. *Promoting recreational value of the river:*
  - Increase use of SARA's parks and recreational facilities.

- Establish new collaborations within communities to expand recreational uses of river resources.

**Goal 3: Deliver valued public service**

1. *Ensuring our responsiveness to basin communities:*
  - Increase the percentage of River Authority revenue leveraged with other funding sources to accomplish River Authority initiated projects and programs.
2. *Providing exceptional service:*
  - Institute a customer service quality standard throughout the River Authority that values professionalism, responsiveness and accountability.

**Goal 4: Advance a sustainable environment**

1. *Supporting human and environmental needs:*
  - Achieve balanced representation on the mandated environmental flow and other resource management programs for the basin.
  - Attain external recognition that all data and analysis produced by the River Authority is of known and documented quality to accurately reflect the environmental conditions within the basin.
2. *Promoting quality of life:*
  - Reduce the impact of flooding within the basin through holistic approaches to watershed management

**Goal 5: Develop successful employees**

1. *Working together*
  - Increase employee participation in the River Authority’s community events.
2. *Learning from each other*
  - Create a recognition program to highlight the value and achievement of employee teams.

**Projects/Programs/Efforts**

River Authority programs, projects and efforts have been planned to support achievement of the organizational performance goals. The fiscal year 2009/10 budget highlights 18 programs that have been analyzed and ranked in accordance with the each of the organizational goals. The programs are comprised of existing multi-year projects as well as new projects to be initiated within this fiscal year.

The programs as defined below are listed in priority order:

- **Stream Restoration Program** - Takes an agency-wide approach to evaluate, prioritize, and mitigate physically impaired stream segments in discrete areas throughout the district either through creek restoration, education, easements, or mitigation banking.

- **Water Quality Best Management Practices Program** - Contains projects that identify sources of specific pollutants and provides best management practices to reduce and/or eliminate those pollutants.
- **Water Resource Planning and Supply Program** - Collaboratively assists cities and utilities in our region to plan, develop, and maintain safe, long-term water supplies for their communities.
- **Nature Based Park Program** - Oversees all River Authority parks projects and efforts, including those documented in *San Antonio River Basin Plan for Nature-based Park Resources*, to enhance the community's appreciation for our natural resources.
- **Community Assistance Program** - Manages community efforts within the following areas: water and wastewater utilities; floodplain management, parks, water quality, GIS, and stream restoration.
- **Environmental Flows Program** - Coordinates projects that pertain to instream flows (freshwater instream flows to support aquatic and riparian ecosystems) and fresh water inflows (freshwater to maintain acceptable conditions in bays and estuaries).
- **Flood Modeling and Mapping Utilization Program** - Control projects and efforts relating to flood modeling, capital project idea development, and mapping of the watershed.
- **Water Quality Monitoring Program** - Encompasses both routine and special projects involved with the monitoring, analysis and data interpretation of surface water samples.
- **Remote Environmental Data Collection Program** - Monitors and manages all projects and efforts that collect environmental data remotely from the River Authority's facilities, dams, rivers and tributaries.
- **Utilities Program** - Department-specific program that manages all of Utilities' water, Wastewater, reuse, and collection system-related projects and efforts.
- **Watershed Modeling and Data Development Program** - Using data, models, and scientific knowledge, develops and manages large scale, holistic, watershed master planning projects and efforts.
- **Groundwater Interaction and Recharge Program** - Coordinates projects and efforts that focus on the relationship between surface water and ground water and enhancement of recharge to aquifers.
- **Dam Management and Safety Program** - Encompasses projects and efforts that study, maintain and rehabilitate San Antonio River Authority dams.

- **Community Outreach and Education Program** - Coordinates projects and efforts that educate and inform communities about the river and its tributaries within River Authority jurisdiction.
- **Watershed Maintenance Program** - Holistically oversees projects and efforts that operate and/or maintain flood conveyance in natural, man-made, and restored channels and stream segments to enhance the riparian environment and our communities' appreciation for the natural resources within these areas.
- **Facilities Development and Asset Management Program** - Oversees construction projects and efforts related to River Authority facilities and, in conjunction with Real Estate, manages the organization's assets to maximize efficiency.
- **Capital Project Implementation Program** - Oversees projects and efforts that include capital improvements, many of which are funded by multiple sources including counties, cities and federal agencies.
- **Technology Development Program** - Monitors and manages all projects and efforts that evaluate, develop, or implement information technology software and hardware in River Authority facilities.

### **Fiscal Year 2009/10 Highlighted Programs**

For the fiscal year 2009/10 several programs are included that are highlighted below because they involve multiple departments or service areas; are highly visible within a particular county within the basin or regionally; and advance the development of a specialized expertise within the River Authority.

#### **Stream Restoration**

This program includes two significant projects that were initiated in fiscal year 2008/09 and will continue to develop in the upcoming fiscal years. The first is the Westside Creeks Restoration Project which is a community-based planning effort initiated in 2008. Its mission is to 1) develop concepts for restoring the environmental condition of the Alazán, Apache, Martínez, and San Pedro Creeks in Bexar County, 2) maintain the current flood control components of these creeks, and 3) provide increased opportunities for people to enjoy these urban creeks. While currently in the Conceptual Design Phase, the ultimate project is expected to include flood control, amenities, ecosystem restoration, and recreational improvements along the Westside Creeks. Once implemented, the project will provide increased opportunities for the creeks in the city's urban core and will be enjoyed by people from all walks of life and all parts of the county.

The second project is the Stream Restoration Team which is to produce excellent stream restoration projects of value for the citizens of the River Authority and use these examples to promote and educate the public on the advantages of natural resource management solutions

to maintaining creeks and rivers. This project will develop the River Authority's expertise in natural stream management and ecosystem restoration through the identification and implementation of target pilot projects throughout the basin.

### **Nature Based Park Program**

The River Authority has an adopted Nature-Based Recreation Master Plan identifying a holistic vision for recreational access and enjoyment of the San Antonio River and its tributaries. The plan involves the development of park and recreational facilities directly by the River Authority or in partnership with other communities within the basin. The plan also serves as a regional nature-based river recreation master plan by documenting the recreational plans of all communities within the district. The River Authority program to implement the master plan involves the development of the San Antonio River Nature Park in Wilson County, the Loop 1604 River Access Site in Bexar County, the Goliad Canoe Paddling Trail the development of additional trails in Karnes and Bexar counties and the continued operation at Jackson Nature Park in Wilson County. As part of this program, the River Authority will be transitioning out of its lease with CPS Energy for the operation of the recreational facilities at Braunig and Calaveras Lake Parks.

### **Community Assistance Program**

Since 2001, the River Authority has developed a program to provide smaller communities throughout the basin service expertise and assistance. This program will maintain regular contact with city, county and economic development officials to foster relationships and identify community assistance and project development opportunities. Additionally, this program will enable coordination of community assistance requests and promote the River Authority's service areas.

### **Environmental Flows Program**

In 2007, the Texas Legislature passed Senate Bill 3 which mandated a basin-by-basin approach to determining the environmental flow requirements to maintain healthy ecosystems in the state's bays and estuaries. The state-mandated process for the River Authority begins in 2009. This program is comprised of several projects aimed at developing science on instream flow, environmental flow, fish communities, and studies and data collection on various aspects of San Antonio Bay.

### **Flood Modeling and Mapping Utilization Program**

This program builds on the River Authority's past investment to update hydraulic and hydrologic computer models to create updated digital Flood Insurance Rate Maps for Bexar, Wilson, Karnes and Goliad Counties. The revised maps will be finalized by the River Authority this fiscal year and will be presented to local communities for approval and will become official by the Federal Emergency Management Agency. The updated information has also been used by the River Authority to create flood warning systems in Bexar County and a downstream flood warning and response system. To build on the expertise gained

through the development of the revised maps and to ensure that the maps remain continually updated, the River Authority will seek designation from the Federal Emergency Management Agency to officially review and make recommendations to the agency regarding proposed changes to the flood plains in our basin.

### **Dam Management and Safety Program**

The River Authority maintains 40 dams in Bexar and Karnes counties. In 2009 the State of Texas implemented new dam safety standards. This program will develop the River Authority's plan to inspect each dam and develop action plans to ensure compliance with the new dam safety criteria. The River Authority will also continue its dam rehabilitation program in conjunction with Bexar County and proceed with the a rehabilitation project on Calaveras 6 to enhance the dam to safety pass 100% of the probable maximum flood event.

### **Watershed Maintenance Program**

In 2008 the River Authority entered into an agreement with the City of San Antonio for the operation and maintenance of completed reaches of the on-going San Antonio River Improvements Project. The River Authority assumed the maintenance of the one-mile Eagleland Reach in 2008 and the 1.5 mile Museum Reach Urban Segment in May 2009. Maintenance on the first phase on the Mission Reach ecosystem restoration project will begin in December 2009. This program tracks the progress on these highly visible maintenance activities to ensure that the River Authority meets the community expectations while sustaining the required staffing expertise to provide the highest quality service.

### **Facilities Development and Asset Management Program**

Since 2003 the River Authority has embarked on a program to develop new facilities including the Environmental Center which includes a new state-of-the-art water quality laboratory to support the advancing scientific needs of the agency while also renovating existing facilities to make them more energy efficient and safer for the employees. This program targets the next phase of the facilities development plan with the construction of a new Utilities Administration Facility to be located at the Martinez II Wastewater Plant. The current facility is comprised of dated temporary portable buildings which do not meet the needs of the Utilities department personnel.

### **Technology Development Program**

Monitors and manages all projects and efforts that evaluate, develop, or implement information technology software and hardware in River Authority facilities.

### **Sources of Funds**

A consistent and important message frequently heard from community leaders is the need for financial resources to address water related needs in their area of operation. The River Authority has available to it several potential sources of funds to support the activities in the Annual Budget. These sources include federal appropriations, interlocal agreements, fund balances,

grants and private donations, and the River Authority's ad valorem operations and maintenance tax. Each funding source is discussed below.

### ***Federal and State Appropriations***

The River Authority has taken great advantage of federal appropriations to support its wastewater and flood control functions. There exists a potential to significantly increase funds available from existing and untapped sources of federal and state funds. The Annual Budget does not reflect an increased level of funding from these sources significantly affecting the bottom line in the short term but it is believed the increases in planning activity proposed by the Plan will increase the flow of federal and state funds for water related programs and projects in the district. Regionalization of public functions and services fosters increased levels of federal and state participation. For example, in the state's grant program for recreation facilities the region-wide recreation plan proposed in the Plan will improve evaluation scores and thereby the chances of individual city or county recreation projects to be funded by the state program. In addition, entities such as the Federal Emergency Management Agency and the Texas Water Development Board and others, desire to develop and implement water related programs with regional entities, particularly entities with jurisdiction over river basins and associated watersheds. These entities realize that the hydrology and hydraulics of water on a watershed basis is more significant in water issues than the boundaries of local jurisdictions.

### ***Interlocal Agreements***

These agreements will continue to be a mainstay revenue source for the River Authority. Examples are the interlocal agreements with the City of San Antonio and Bexar County whereby the River Authority provides certain flood control functions that are paid by the City and County. Other examples include the Regional Water Resources Development Group, i.e. the joint effort to buy Edwards Aquifer water rights administered by the River Authority and the SB-1 Regional Planning process, both of which are funded by the program participants.

### ***Fund Balances***

These may be used to support new activities. The River Authority has adopted a funds management policy to describe the protocol for use of the fund balances including maintenance of reserves to protect the River Authority's financing capability and to provide operating reserves. The Annual Budget recommends that the fund balances be used to fund capital projects rather than operations and maintenance activities.

### ***Grants and Private Donations***

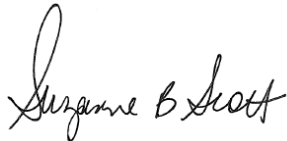
During the past three fiscal years, the River Authority has increased its application for and receipt of grant funding and will continue to seek this source of funding for activities consistent with the Annual Budget. In addition, many charitable trusts and other sources

of private funds have recreation-related or environmental protection, enhancement, and education activities as key elements. The improved planning tools and products, e.g. master plans that will be developed according to the Annual Budget, will improve the River Authority's opportunities to access private donations.

***Maintenance and Operations Tax***

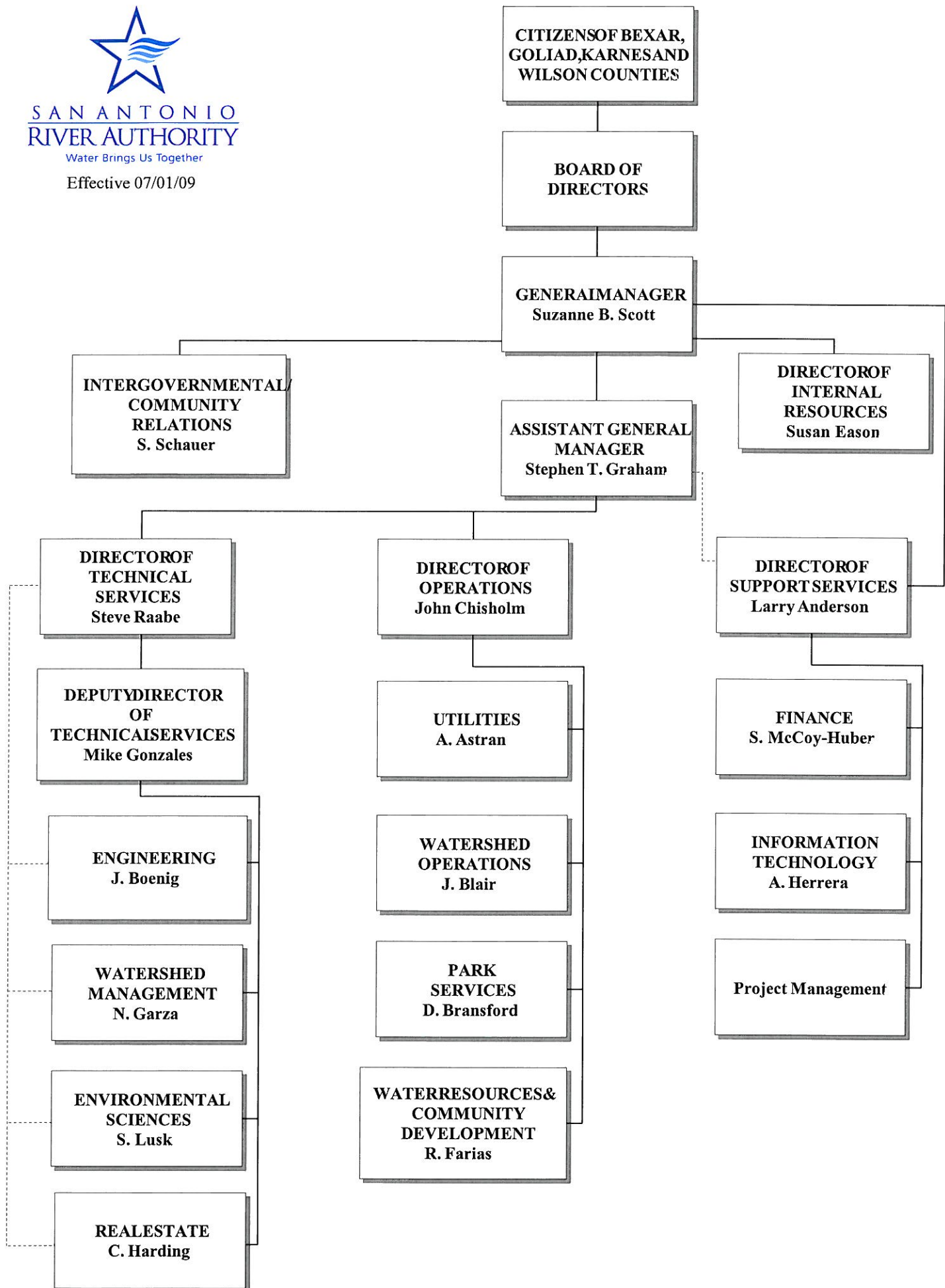
Many the River Authority activities, such as flood control and water quality protection, do not have revenue sources and are typically supported as a governmental function by an ad valorem tax. The River Authority is authorized to collect an ad valorem tax at a maximum of \$0.02 per \$100 of assessed value. Collected by the River Authority from 1961 to 1980, the ad valorem tax was not collected from 1980 to 2002 because other funding sources listed above supported the River Authority's activities. The tax may be used for operations and maintenance activities, which include all activities other than direct capital investment in infrastructure. Typical projects include loans and grants for start-up operations, purchase of water related facilities, purchase of items to support expansion of activities, and purchase of water rights.

Respectfully submitted,



SUZANNE B. SCOTT  
General Manager

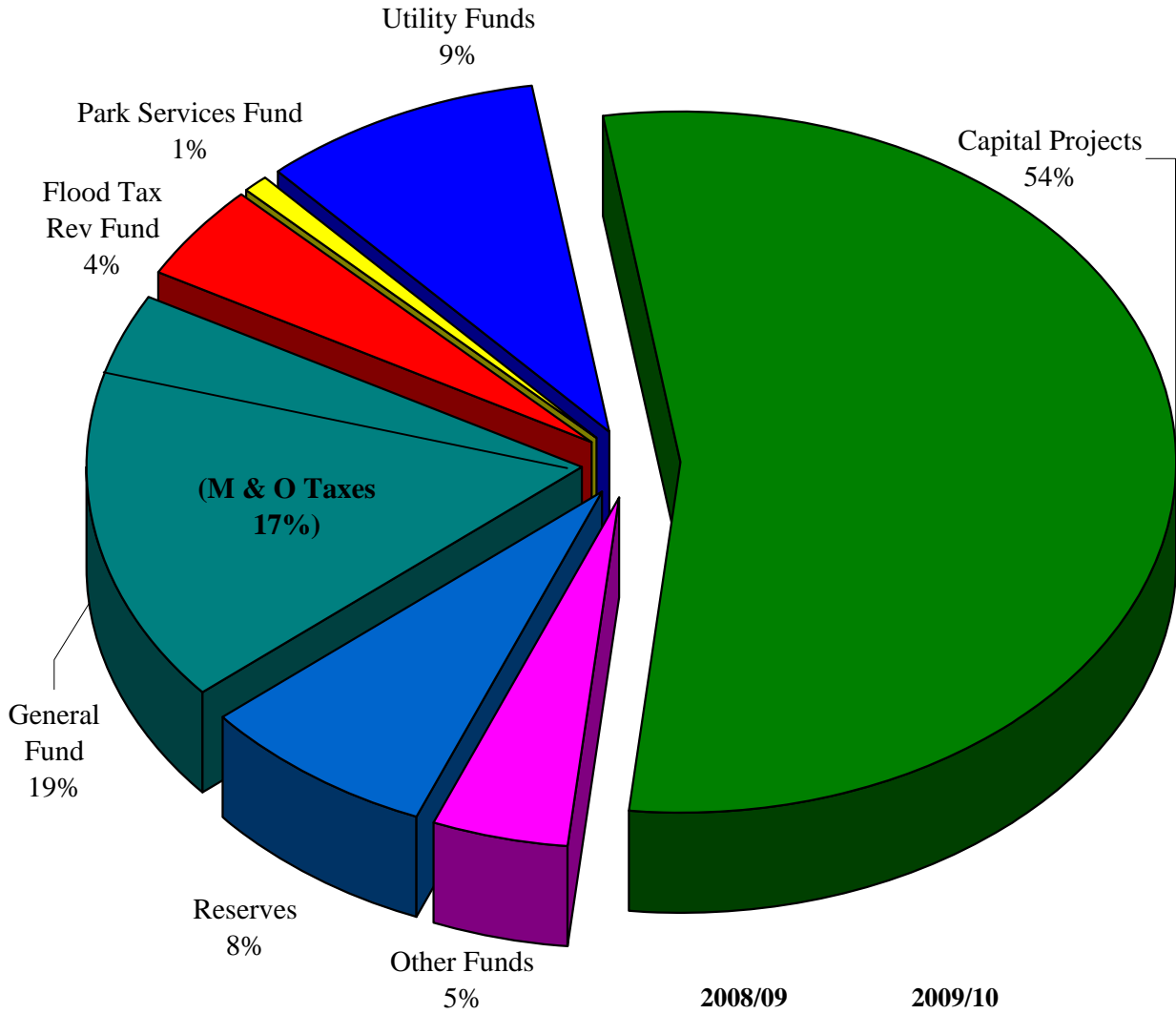
SHARON L. McCOY-HUBER  
Financial Services Manager



**SAN ANTONIO RIVER AUTHORITY  
SUMMARY - ALL FUNDS  
2009/10**

	Beginning Balance July 1, 2009	Revenues	Expenditures	Ending Balance June 30, 2010
<b>GENERAL FUND</b>	12,698,735	20,332,180	20,961,409	10,931,860
<b>DEBT SERVICE FUND</b>	4,615,409	55,000	5,517,526	4,687,117
<b>SPECIAL REVENUE FUNDS</b>				
Flood Control Tax Revenue	1,356,194	4,725,000	35,000	511,960
TCEQ Clean Rivers Program	-	245,590	336,234	-
ESD Contracts	-	55,171	55,171	-
EPA 319 Grant	-	257,655	500,531	-
Karnes Co Maintenance	-	139,915	279,830	-
So. TX Regional Water Planning Group	-	480,736	480,736	-
Regional Water Resource Development Group	-	48,000	48,000	-
Regional Water Alliance	12,085	4,000	-	16,085
Kenedy Desalination	-	375,000	380,000	-
Estuary Responses	-	63,000	163,650	-
San Geronimo	-	-	100,500	-
SACIP Land Sales	42,982	57,056	-	100,038
SARA Public Facility Corporation	-	354,535	354,535	-
SARIDA	80,833	2,000	11,224	71,609
<b>CAPITAL PROJECTS FUNDS</b>				
San Antonio River Foundation	-	743,933	743,933	-
SACIP - 1999	30,984	-	30,984	-
Bexar County Capital Projects	-	50,000	50,000	-
<b>AGENCY FUNDS</b>				
City of San Antonio	-	4,065,794	4,065,794	-
San Antonio Water System	-	179,582	179,582	-
Bexar County - SARIP	-	1,914,245	1,914,245	-
Bexar County - CIP	-	1,847,244	1,847,244	-
Bexar County - Visitor Tax	-	14,746,413	14,746,413	-
RWRDG Water Purchases	-	250,000	250,000	-
<b>ENTERPRISE FUNDS</b>				
SARA Wastewater Systems Operating Fund	4,724,764	5,915,710	6,274,353	1,995,606
SARA Wastewater Systems Construction & Imp	794,240	226,000	4,819,879	(490,781)
Salatrillo Operating Fund	885,232	2,285,249	2,828,148	29,873
Salatrillo Construction & Improvement	6,703,062	643,000	3,877,935	3,030,587
Salatrillo Retail Fund	758,897	530,433	536,280	753,050
Randolph AFB Operating Fund	-	407,065	513,035	(105,970)
Randolph AFB Renewals & Replacement Fund	211,415	299,728	276,484	234,659
Water Systems	(17,577)	243,243	277,678	(52,012)
Utility Operation & Maintenance Agmt Fund	-	271,058	271,058	-
Park Services	-	757,757	1,104,469	(76,994)
<b>INTERNAL SERVICE FUNDS</b>				
Insurance Fund	60,408	2,338,320	2,390,325	8,403
<b>GRAND TOTAL</b>	<u>32,957,663</u>	<u>64,909,612</u>	<u>76,222,185</u>	<u>21,645,090</u>

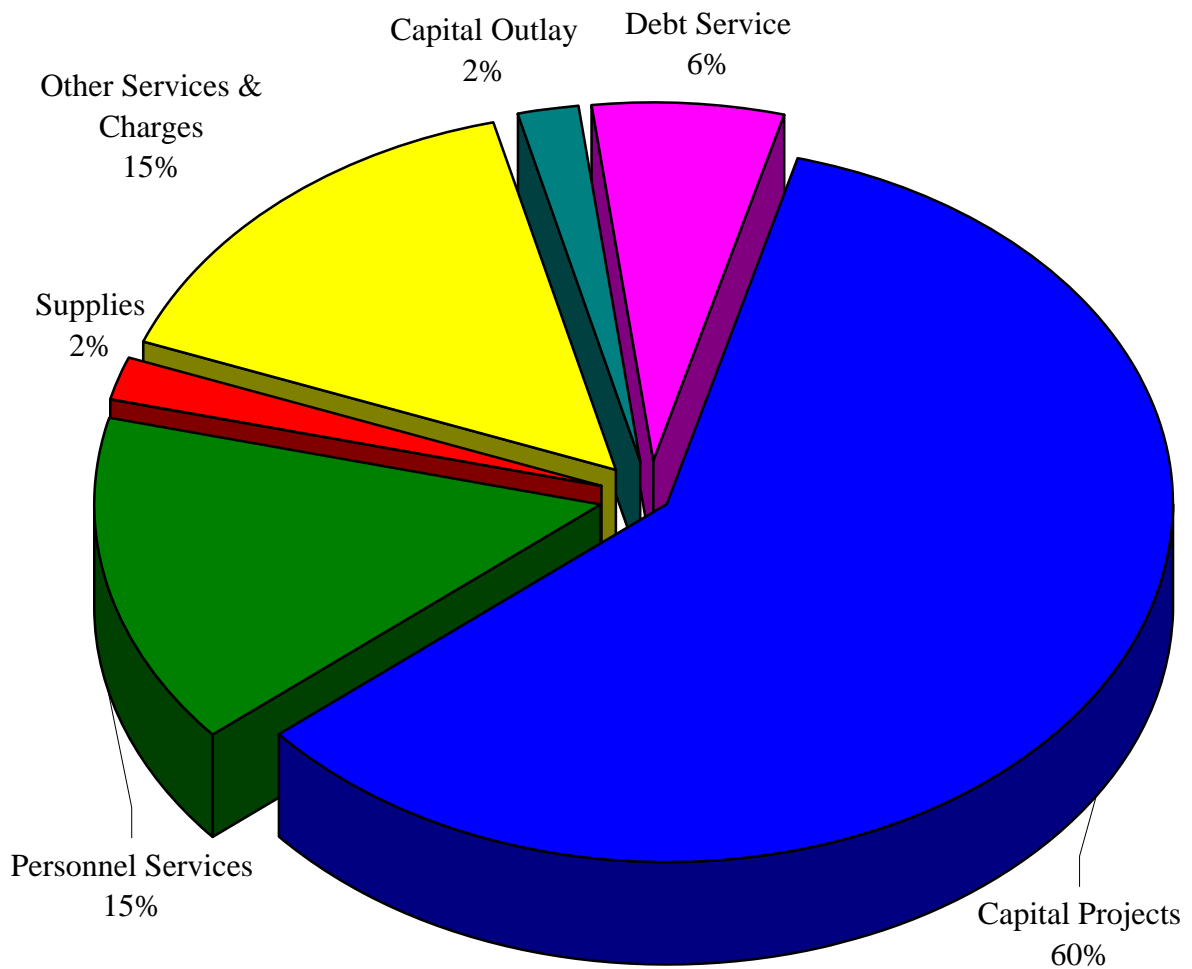
**SAN ANTONIO RIVER AUTHORITY  
REVENUES - ALL FUNDS - BY FUND  
2009/10**



	2007/08 ACTUAL	2008/09 CURRENT BUDGET	2009/10 ADOPTED BUDGET
General Fund	\$ 21,631,118	\$ 23,868,141	\$ 20,250,222
Flood Tax Rev Fund	5,265,831	4,745,000	4,725,000
Park Services Fund	1,456,048	1,531,688	757,757
Utility Funds	8,813,945	8,914,760	9,654,348
Capital Projects	52,570,538	70,295,330	57,254,009
Other Funds	2,998,060	4,400,232	4,818,818
Reserves	-	5,803,285	8,069,558
<b>TOTAL</b>	<b>\$ 92,735,540</b>	<b>\$ 119,558,436</b>	<b>\$ 105,529,712</b>

less operating transfers in

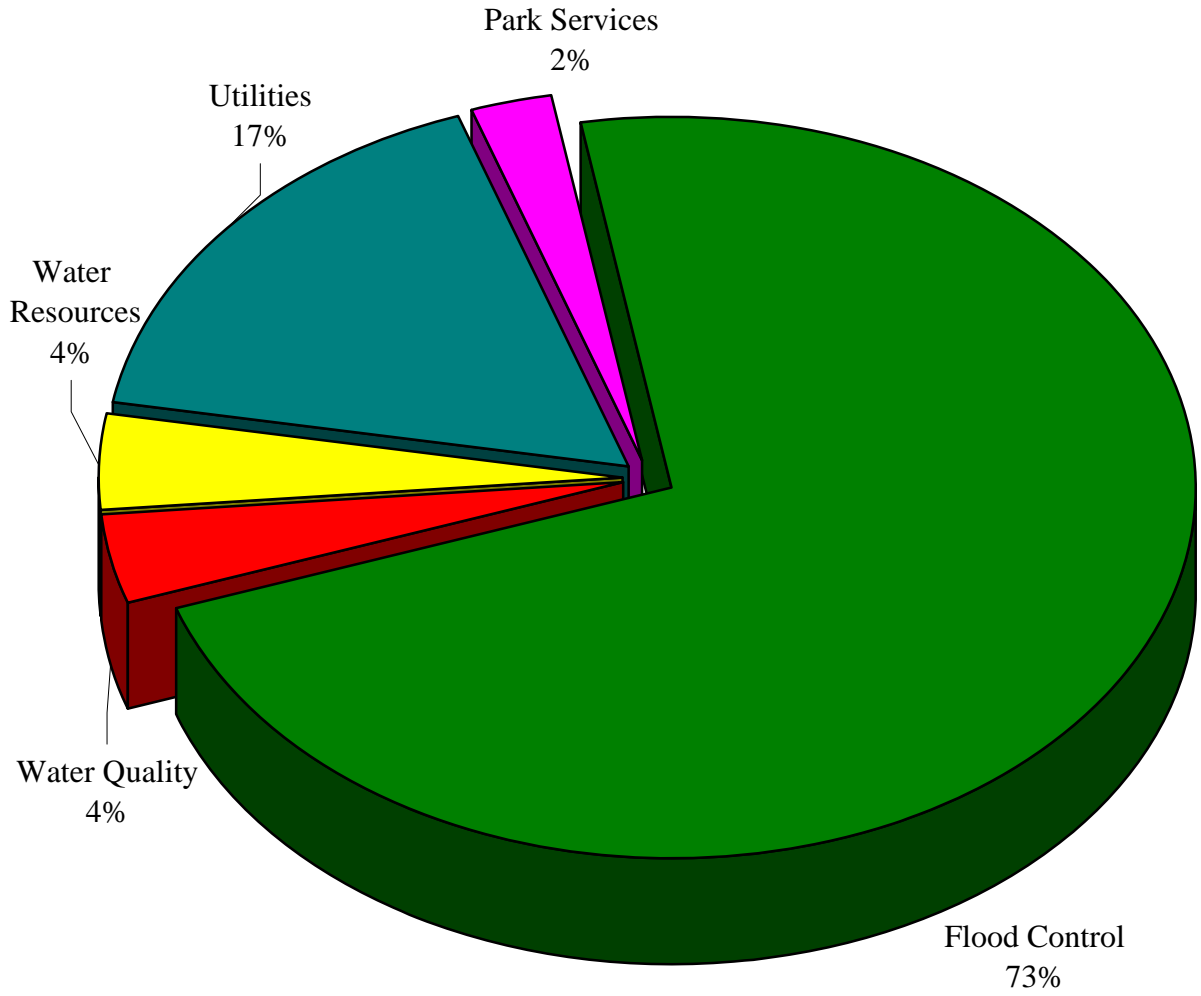
**SAN ANTONIO RIVER AUTHORITY  
EXPENDITURES - ALL FUNDS - BY CLASSIFICATION  
2009/10**



	<b>2007/08 ACTUAL</b>	<b>2008/09 CURRENT BUDGET</b>	<b>2009/10 PROPOSED BUDGET</b>
Personnel Services	\$ 12,175,996	\$ 14,919,010	\$ 15,772,880
Supplies	1,790,071	2,235,688	2,009,810
Other Services & Charges	16,102,479	21,056,706	16,144,597
Capital Outlay	2,112,219	3,576,242	2,252,421
Debt Service	6,793,106	5,445,818	6,441,449
Capital Projects	49,042,797	72,324,972	62,908,555
Reserves	4,718,872	-	-
	<u>\$ 92,735,540</u>	<u>\$ 119,558,436</u>	<u>\$ 105,529,712</u>

less operating transfers out  
& depreciation

**SAN ANTONIO RIVER AUTHORITY  
EXPENDITURES - ALL FUNDS - BY SERVICE AREA  
2009/10**



	<b>2007/08 ACTUAL</b>	<b>2008/09 CURRENT BUDGET</b>	<b>2009/10 PROPOSED BUDGET</b>
Flood Control	\$ 67,619,878	\$ 69,079,129	\$ 76,430,399
Water Quality	2,954,617	4,503,562	4,075,621
Water Resources	3,118,788	5,304,254	4,618,925
Utilities	11,808,837	36,389,346	17,894,829
Park Services	2,514,548	4,282,145	2,509,938
Reserves	4,718,872	-	-
	<u>\$ 92,735,540</u>	<u>\$ 119,558,436</u>	<u>\$ 105,529,712</u>

less operating transfers out  
& depreciation

**SAN ANTONIO RIVER AUTHORITY  
GENERAL FUND OPERATING BUDGET  
2009/10**

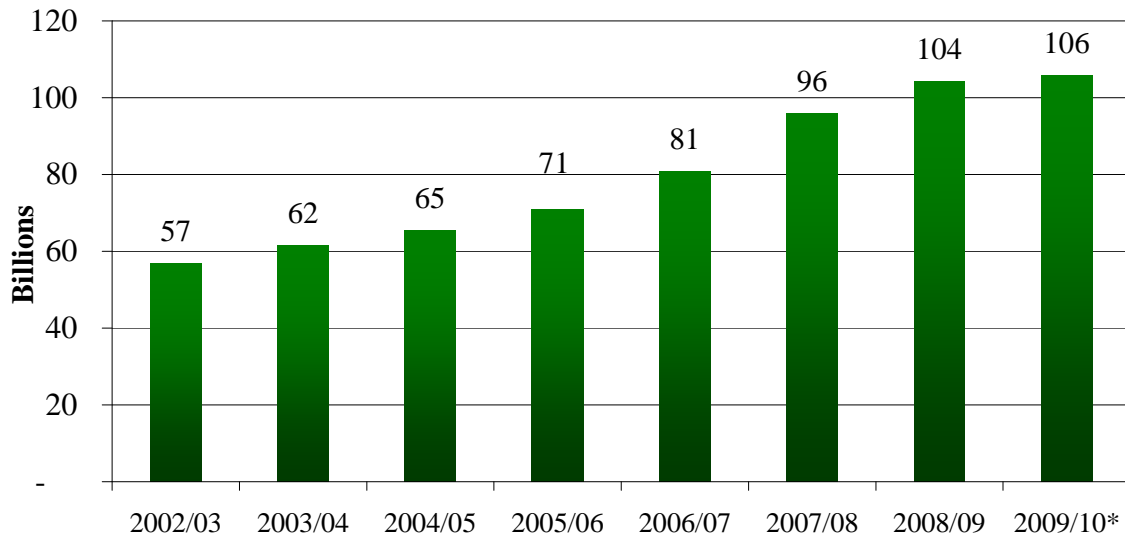
**FUND 101**

DESCRIPTION	2007/08 ACTUAL	2008/09 CURRENT BUDGET	2009/10 ADOPTED BUDGET
<b>Estimated Beginning Balance, July 1</b>	N/A	N/A	<u>\$ 12,998,736</u>
<b>Beginning Balance, July 1</b>	<u>\$ 10,662,283</u>	<u>\$ 13,626,081</u>	N/A
 <b>REVENUES</b>			
Taxes, Penalties & Interest (Unrestricted)	303,139	200,000	150,000
Taxes, Penalties & Interest (M&O)	15,145,421	16,467,419	16,807,447
Intergovernmental Funding	190,906	7,500	7,500
Charges for Services	382,094	506,084	528,806
Miscellaneous	449,175	240,150	338,750
Sales	295	500	250
Support Fees	2,095,178	2,223,499	2,287,469
Other Financing Sources	<u>861,661</u>	<u>1,190,000</u>	<u>130,000</u>
<b>TOTAL REVENUES</b>	<u><b>19,427,869</b></u>	<u><b>20,835,152</b></u>	<u><b>20,250,222</b></u>
 <b>EXPENDITURES</b>			
Personnel Services	8,099,264	10,139,762	11,307,378
Reimbursements	(2,283,170)	(3,032,989)	(2,995,096)
Supplies	987,181	1,291,611	1,347,496
Other Services & Charges	6,978,156	9,524,038	10,041,775
Capital Outlay (Unrestricted)	447,027	402,000	250,000
Capital Outlay (M&O)	1,263,593	2,735,639	1,450,700
Other Financing Uses	<u>972,019</u>	<u>902,436</u>	<u>878,840</u>
<b>TOTAL EXPENDITURES</b>	<u><b>16,464,070</b></u>	<u><b>21,962,497</b></u>	<u><b>22,281,093</b></u>
 Revenues Over (Under) Expenditures	 <u><b>2,963,798</b></u>	 <u><b>(1,127,345)</b></u>	 <u><b>(2,030,871)</b></u>
 <b>Estimated Ending Balance, June 30</b>	 N/A	 <u><b>\$ 12,498,736</b></u>	 <u><b>\$ 10,967,865</b></u>
<b>Ending Balance, June 30</b>	<u><b>\$ 13,626,081</b></u>	N/A	N/A
 <b>Components of Ending Balance</b>			
Unrestricted	9,825,008	10,985,103	10,885,103
Maintenance & Operations Tax	3,801,073	1,513,633	82,762

## SAN ANTONIO RIVER AUTHORITY PROPERTY TAXES

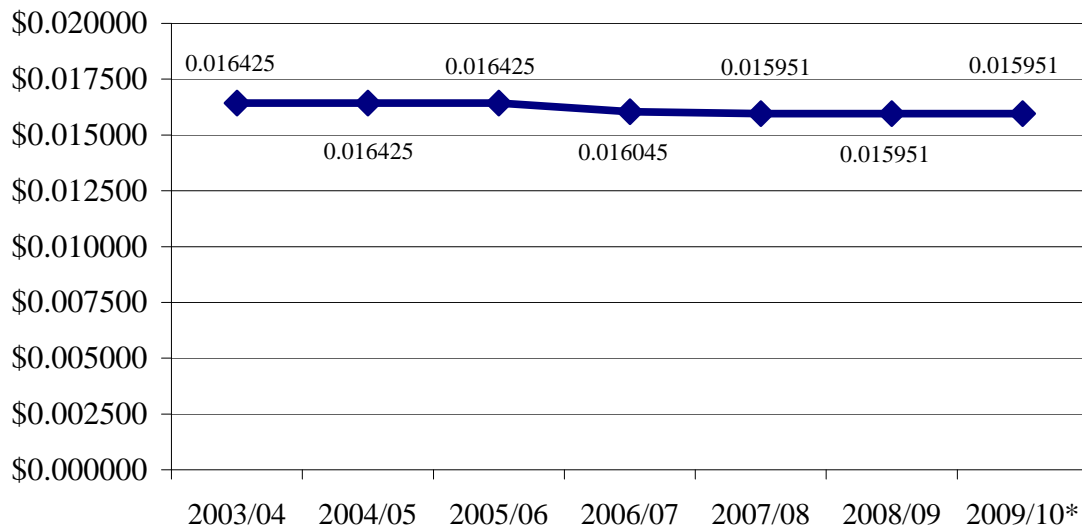
In 1961, an ad valorem tax of \$0.02 per \$100 assessed valuation was approved by Authority voters to pay general administrative expenses, maintain completed projects, and update the Authority's master plan for water resource development. However, effective July 1, 1977, the tax was reduced to \$0.015 per \$100 assessed valuation, and effective July 1, 1979, the tax was further reduced to \$0.01 per \$100 assessed valuation by action of the Authority. Until 2002, no levy of this tax has been made since fiscal year 1980. In fiscal year 2003, the San Antonio River Authority Board of Directors, upon approving the five year financial plan, voted in the ad valorem tax at a rate of

### Property Tax Valuations



\* 2009/10 valuation is estimated. Certified roles to be received from the Appraisal Districts July 26, 2009.

### Property Tax Rates



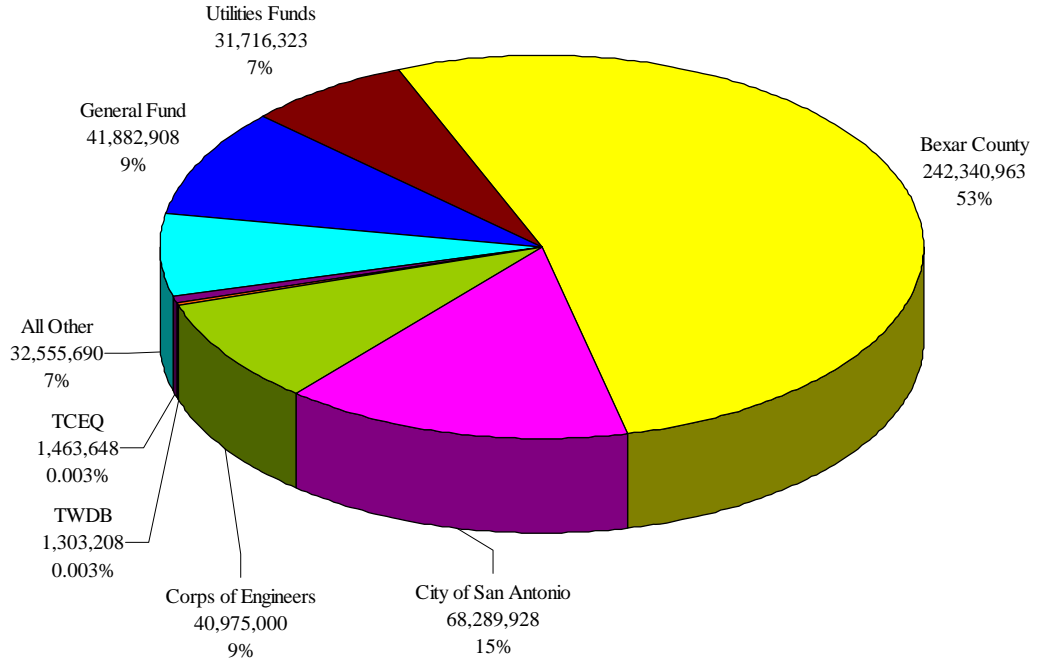
\* 2009/10 rate is estimated. The tax rate is schedule to be set September 1, 2009.

## SAN ANTONIO RIVER AUTHORITY PROGRAM BUDGETS

Below are charts related to the River Authority's projects portfolio (charts include estimated figures):

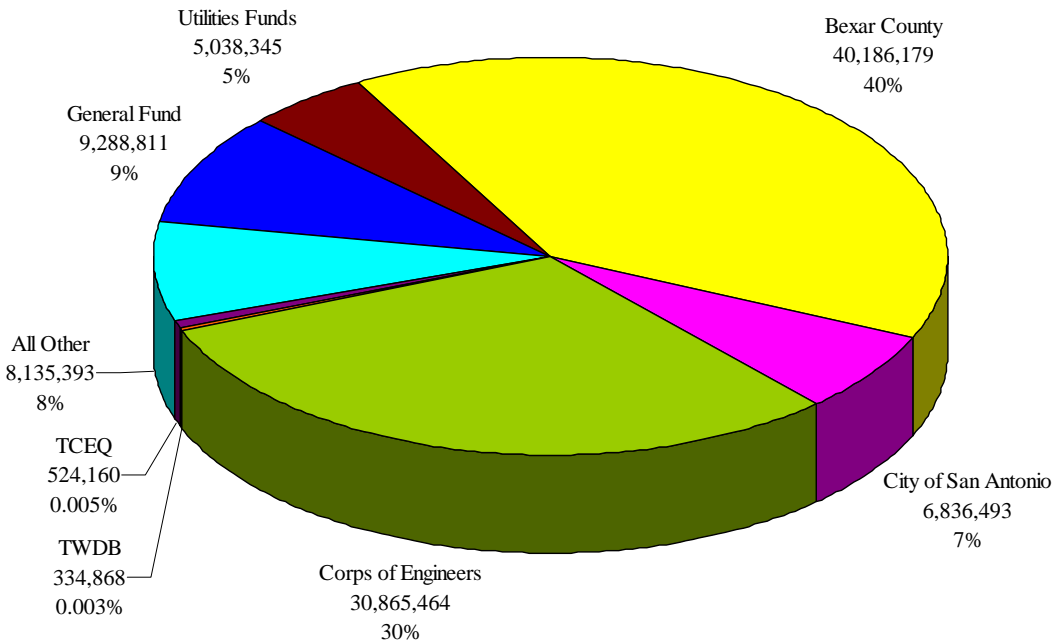
Funding Sources and Cost Allocations to Projects Managed by the River Authority (projects from start to finish with multiple fiscal years included)

*The total funds managed by the River Authority: \$460,527,668.*



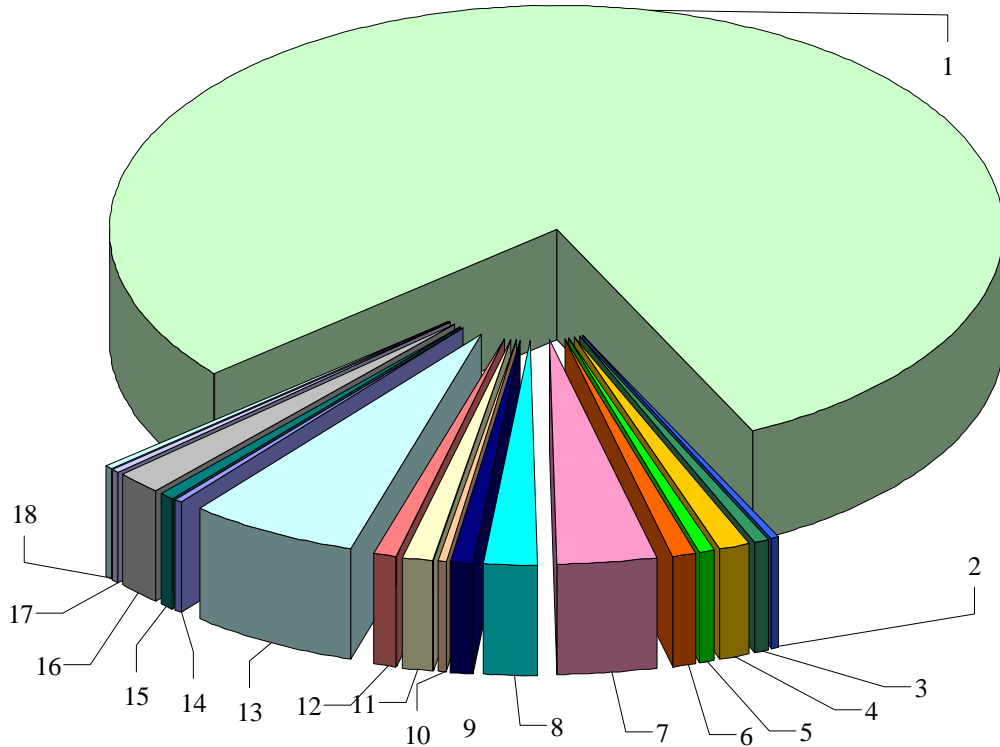
Funding Sources and Cost Allocations to Projects Managed by the River Authority for the Fiscal Year 2009/10

*The total funds managed by the River Authority during fiscal year 2009/10: \$101,242,289.*



# SAN ANTONIO RIVER AUTHORITY PROGRAM BUDGETS

Total Funding by Program



#	Program	Programs in \$
1	Capital Project Implementation Program	363,605,901
2	Community Assistance Program	613,948
3	Community Outreach and Education Program	3,284,150
4	Dam Management and Safety Program	5,205,333
5	Environmental Flows Program	2,571,127
6	Facilities Development and Asset Management Program	3,329,251
7	Flood Modeling and Mapping Utilization Program	16,725,293
8	Groundwater Interaction and Recharge Program	8,555,493
9	Nature Based Park Program	4,666,710
10	Remote Environmental Data Collection Program	1,397,463
11	Stream Restoration Program	3,995,876
12	Technology Development Program	3,798,181
13	Utilities Program	28,397,125
14	Water Quality Best Management Practices Program	1,316,603
15	Water Quality Monitoring Program	2,581,331
16	Water Resource Planning and Supply Program	7,961,150
17	Watershed Maintenance Program	658,767
18	Watershed Modeling and Data Development Program	1,863,966
		460,527,668

**SAN ANTONIO RIVER AUTHORITY  
PERSONNEL  
2009/10**

The San Antonio River Authority proudly recruits and employs resourceful and dependable people who strive to meet our mission. We are a Character organization strongly rooted in the belief of hiring, retaining, and developing employees whose actions are predictably right.

DESCRIPTION	2007/08 ACTUAL	2008/09 CURRENT BUDGET	2009/10 ADOPTED BUDGET
<b>Breakdown by Employment Type</b>			
Full time Employees	210	232	236
Part time Employees	1	5	3
Elected Officials	<u>12</u>	<u>12</u>	<u>12</u>
Total	<u>223</u>	<u>249</u>	<u>251</u>
<b>Breakdown by Funding Source</b>			
General Fund	132	155.6	157.6
Park Services Fund	28	29.2	29.2
Utility Funds	<u>63</u>	<u>64.2</u>	<u>64.2</u>
Total	<u>223</u>	<u>249</u>	<u>251</u>

**San Antonio River Authority  
Debt Service Schedule  
Channel Improvement Revenue Bonds**

<b>Payment Date</b>	<b>Annual Principal Amount</b>	<b>Interest Amount</b>	<b>Total</b>	<b>Fiscal Year Amount</b>	<b>Fiscal Year</b>	<b>Balance</b>
7/1/2009	3,650,000	965,409	4,615,409			
1/1/2010		897,117	897,117	5,512,526	2009/10	45,665,000
7/1/2010	3,790,000	897,117	4,687,117			
1/1/2011		821,821	821,821	5,508,938	2010/11	42,015,000
7/1/2011	3,940,000	821,821	4,761,821			
1/1/2012		742,654	742,654	5,504,474	2011/12	38,225,000
7/1/2012	3,605,000	742,654	4,347,654			
1/1/2013		668,567	668,567	5,016,221	2012/13	34,285,000
7/1/2013	3,050,000	668,567	3,718,567			
1/1/2014		597,823	597,823	4,316,390	2013/14	30,680,000
7/1/2014	1,935,000	597,823	2,532,823			
1/1/2015		562,206	562,206	3,095,029	2014/15	27,630,000
7/1/2015	2,015,000	562,206	2,577,206			
1/1/2016		524,312	524,312	3,101,518	2015/16	25,695,000
7/1/2016	2,095,000	524,312	2,619,312			
1/1/2017		479,062	479,062	3,098,374	2016/17	23,680,000
7/1/2017	2,185,000	479,062	2,664,062			
1/1/2018		431,418	431,418	3,095,480	2017/18	21,585,000
7/1/2018	2,300,000	431,418	2,731,418			
1/1/2019		380,393	380,393	3,111,811	2018/19	19,400,000
7/1/2019	2,400,000	380,393	2,780,393			
1/1/2020		327,118	327,118	3,107,511	2019/20	17,100,000
7/1/2020	2,520,000	327,118	2,847,118			
1/1/2021		269,915	269,915	3,117,033	2020/21	14,700,000
7/1/2021	1,080,000	269,915	1,349,915			
1/1/2022		247,492	247,492	1,597,407	2021/22	12,180,000
7/1/2022	815,000	247,492	1,062,492			
1/1/2023		230,173	230,173	1,292,665	2022/23	11,100,000
7/1/2023	860,000	230,173	1,090,173			
1/1/2024		211,402	211,402	1,301,575	2023/24	10,285,000
7/1/2024	895,000	211,402	1,106,402			
1/1/2025		191,809	191,809	1,298,211	2024/25	9,425,000
7/1/2025	935,000	191,809	1,126,809			
1/1/2026		171,206	171,206	1,298,016	2025/26	8,530,000
7/1/2026	980,000	171,206	1,151,206			
1/1/2027		149,613	149,613	1,300,819	2026/27	7,595,000
7/1/2027	1,030,000	149,613	1,179,613			
1/1/2028		126,356	126,356	1,305,969	2027/28	6,615,000
7/1/2028	1,075,000	126,356	1,201,356			
1/1/2029		102,084	102,084	1,303,441	2028/29	5,585,000

**San Antonio River Authority  
Debt Service Schedule  
Channel Improvement Revenue Bonds**

<b>Payment Date</b>	<b>Annual Principal Amount</b>	<b>Interest Amount</b>	<b>Total</b>	<b>Fiscal Year Amount</b>	<b>Fiscal Year</b>	<b>Balance</b>
7/1/2029	1,130,000	102,084	1,232,084			
1/1/2030		76,569	76,569	1,308,653	2029/30	4,510,000
7/1/2030	1,185,000	76,569	1,261,569			
1/1/2031		49,813	49,813	1,311,381	2030/31	3,380,000
7/1/2031	1,250,000	49,813	1,299,813			
1/1/2032		21,588	21,588	1,321,400	2031/32	2,195,000
7/1/2032	590,000	21,588	611,588			
1/1/2033		8,209	8,209	619,797	2033/34	945,000
7/1/2033	175,000	8,209	183,209			
1/1/2034		4,163	4,163	187,372	2034/35	355,000
7/1/2034	180,000	4,163	184,163			
1/1/2035	-	-	-	184,163	2035/36	180,000
<b>TOTALS</b>	<u>45,665,000</u>	<u>17,551,171</u>	<u>63,216,171</u>	<u>63,216,171</u>		

**San Antonio River Authority  
Debt Service Schedule  
Martinez-Salatrillo Sewage System Revenue Bonds**

<b>Payment Date</b>	<b>Annual Principal Amount</b>	<b>Interest Amount</b>	<b>Total</b>	<b>Fiscal Year Amount</b>	<b>Fiscal Year</b>	<b>Balance</b>
7/1/2009	360,000	109,069	469,069			
1/1/2010		102,694	102,694	571,763	2009/10	5,200,000
7/1/2010	385,000	102,694	487,694			
1/1/2011		95,281	95,281	582,975	2010/11	4,840,000
7/1/2011	390,000	95,281	485,281			
1/1/2012		87,731	87,731	573,013	2011/12	4,455,000
7/1/2012	405,000	87,731	492,731			
1/1/2013		79,575	79,575	572,306	2012/13	4,065,000
7/1/2013	420,000	79,575	499,575			
1/1/2014		70,970	70,970	570,545	2013/14	3,660,000
7/1/2014	440,000	70,970	510,970			
1/1/2015		61,745	61,745	572,715	2014/15	3,240,000
7/1/2015	300,000	61,745	361,745			
1/1/2016		55,595	55,595	417,340	2015/16	2,800,000
7/1/2016	310,000	55,595	365,595			
1/1/2017		49,163	49,163	414,758	2016/17	2,500,000
7/1/2017	325,000	49,163	374,163			
1/1/2018		42,256	42,256	416,419	2017/18	2,190,000
7/1/2018	340,000	42,256	382,256			
1/1/2019		34,861	34,861	417,118	2018/19	1,865,000
7/1/2019	355,000	34,861	389,861			
1/1/2020		26,874	26,874	416,735	2019/20	1,525,000
7/1/2020	370,000	26,874	396,874			
1/1/2021		18,549	18,549	415,423	2020/21	1,170,000
7/1/2021	390,000	18,549	408,549			
1/1/2022		9,481	9,481	418,030	2021/22	800,000
7/1/2022	410,000	9,481	419,481			
1/1/2023	-	-	-	419,481	2022/23	410,000
<b>TOTALS</b>	<u>5,200,000</u>	<u>1,578,619</u>	<u>6,778,619</u>	<u>6,778,619</u>		

**San Antonio River Authority  
Debt Service Schedule  
Public Facility Corporation Lease Revenue Bonds**

<b>Payment Date</b>	<b>Annual Principal Amount</b>	<b>Coupon Rate</b>	<b>Interest Amount</b>	<b>Total</b>	<b>Fiscal Year Amount</b>	<b>Fiscal Year</b>	<b>Balance</b>
10/1/2009	175,000	4.200%	91,605	266,605			
4/1/2010			87,930	87,930	354,535	2009/10	4,310,000
10/1/2010	185,000	4.220%	87,930	272,930			
4/1/2011			84,026	84,026	356,956	2010/11	4,135,000
10/1/2011	195,000	4.270%	84,026	279,026			
4/1/2012			79,863	79,863	358,889	2011/12	3,950,000
10/1/2012	200,000	4.310%	79,863	279,863			
4/1/2013			75,553	75,553	355,416	2012/13	3,755,000
10/1/2013	210,000	4.350%	75,553	285,553			
4/1/2014			70,986	70,986	356,539	2013/14	3,555,000
10/1/2014	220,000	4.380%	70,986	290,986			
4/1/2015			66,168	66,168	357,153	2014/15	3,345,000
10/1/2015	230,000	4.420%	66,168	296,168			
4/1/2016			61,085	61,085	357,252	2015/16	3,125,000
10/1/2016	240,000	4.220%	61,085	301,085			
4/1/2017			56,021	56,021	357,105	2016/17	2,895,000
10/1/2017	250,000	4.220%	56,021	306,021			
4/1/2018			50,746	50,746	356,766	2017/18	2,655,000
10/1/2018	260,000	4.220%	50,746	310,746			
4/1/2019			45,260	45,260	356,005	2018/19	2,405,000
10/1/2019	270,000	4.220%	45,260	315,260			
4/1/2020			39,563	39,563	354,822	2019/20	2,145,000
10/1/2020	280,000	4.220%	39,563	319,563			
4/1/2021			33,655	33,655	353,217	2020/21	1,875,000
10/1/2021	295,000	4.220%	33,655	328,655			
4/1/2022			27,430	27,430	356,085	2021/22	1,595,000
10/1/2022	305,000	4.220%	27,430	332,430			
4/1/2023			20,995	20,995	353,425	2022/23	1,300,000
10/1/2023	320,000	4.220%	20,995	340,995			
4/1/2024			14,243	14,243	355,237	2023/24	995,000
10/1/2024	330,000	4.220%	14,243	344,243			
4/1/2025			7,280	7,280	351,522	2024/25	675,000
10/1/2025	345,000	4.220%	7,280	352,280			
4/1/2026	-		-	-	352,280	2025/26	345,000
<b>TOTALS</b>	<u>4,310,000</u>		<u>1,733,202</u>	<u>6,043,202</u>	<u>6,043,202</u>		

Since fiscal year 2002/03 budget, the San Antonio River Authority (River Authority) Board of Directors (Board) has adopted a Five Year Service and Financial Plan that better defines and describes the annual activities planned to focus on achieving sustained superior performance by directing our services and expertise where the River Authority can provide the greatest value. Our goals, objectives and performance areas aid in forecasting the fiscal implications associated with implementation.

## **FINANCIAL INFORMATION**

The manager responsible for each area department presented, estimated the cost of current and new activities for the five-year period beginning fiscal year 2009/10. Managers used the same budgeting procedures used to prepare annual budgets and summarized costs for the River Authority operating funds, (General, SARA Wastewater System, Park Services and SARA Water Funds).

This is the first Five Year Service and Financial Plan to include a detailed breakdown for operations and maintenance of the San Antonio River for the SARIP. It also should be noted that the funding listed on the following pages represent best-case assumptions for the accomplishment of new activities. Some projects may not occur due to inability of local entities to financially support the capital cost of projects, lack of community support, etc. This Plan does not address the capital requirements for design and implementation of new projects or services; rather it represents the cost to support new initiatives to the point they require capital for design and implementation. It is anticipated interlocal agreements between the River Authority and local governments will be used to address capital requirements for design and implementation of new projects or services.

It may be noted that the fund balance in future years may indicate expenditures are in excess of anticipated revenues. Future budgeting will balance expenditures versus revenues on a year to year basis. Activities and programs will be adjusted to reflect actual capabilities based on realistic revenue projections.

## General Fund

Division/Department	Current Budget 2008/09	Proposed Budget 2009/10	2010/11	2011/12	2012/13	2013/14
<b>Board of Directors</b>	\$ 185,400	\$ 191,856	\$ 211,251	\$ 215,281	\$ 219,452	\$ 223,768
<b>Executive Offices</b>	1,165,828	1,165,982	1,199,629	1,231,808	1,264,933	1,299,034
<b>Intergovernmental &amp; Community Relations</b>	1,004,147	1,188,940	1,558,593	1,772,070	1,389,284	1,412,845
<b>Internal Resources</b>						
Director of Internal Resources	157,956	164,437	170,720	177,302	184,146	191,040
Human Resources	428,133	432,159	447,113	462,471	478,202	494,274
Internal Resources	1,696,534	1,646,596	1,530,150	1,562,805	1,596,892	1,632,476
Total Internal Resources	2,282,623	2,243,192	2,147,983	2,202,578	2,259,240	2,317,790
<b>Support Services</b>						
Director of Support Services	173,303	170,377	176,842	183,603	190,679	198,091
Finance	1,814,866	2,074,743	1,870,311	2,286,526	2,005,541	2,577,496
Organizational Services	166,527	199,629	180,037	186,581	193,377	200,434
Information Technology	2,355,546	1,692,557	1,736,168	1,771,187	1,807,674	1,845,694
Total Support Services	4,510,242	4,137,306	3,963,358	4,427,897	4,197,271	4,821,715
Total General Government	9,148,240	8,927,276	9,080,814	9,849,634	9,330,180	10,075,152
<b>Technical Services</b>						
Director of Technical Services	234,162	386,004	400,867	416,120	431,875	448,153
Engineering Services	1,576,852	2,209,783	2,273,698	2,334,495	2,382,481	2,447,734
Watershed Management	3,311,926	3,062,335	1,805,752	1,727,841	1,683,300	1,720,323
Environmental Sciences	2,871,071	2,802,466	2,929,125	3,182,250	3,305,372	3,368,806
Real Estate	613,718	643,040	505,858	522,230	539,174	556,712
Total Technical Services	8,607,729	9,103,628	7,915,300	8,182,936	8,342,202	8,541,728
<b>Operations</b>						
Director of Operations	163,393	163,299	169,772	176,454	183,339	190,378
Watershed Operations	2,868,246	2,007,579	2,262,849	2,228,825	2,215,649	2,272,487
SAR Urban Segment Operations	460,137	857,166	897,763	921,399	945,928	971,385
SAR Eagleland Segment Operations	175,325	271,047	280,793	290,924	301,458	312,411
SAR Mission Segment Operations	114,538	410,459	900,610	895,518	1,064,368	1,401,249
Parks Administration	133,185	154,123	104,392	107,259	110,225	113,295
Jackson Nature Park	57,381	48,760	49,850	50,978	52,145	53,353
River Access Sites	76,649	161,239	146,071	879,106	132,247	135,497
SA River Nature Park	340,461	447,003	1,375,798	347,831	1,295,110	362,643
Water Resources & Community Development	1,947,767	1,845,770	1,675,261	1,642,469	1,659,967	1,632,539
Total Operations	6,337,082	6,366,445	7,863,159	7,540,763	7,960,436	7,445,237
Reimbursements	(3,032,989)	(2,995,096)	(3,099,924)	(3,208,422)	(3,320,716)	(3,436,942)
Operating Transfers Out	902,436	878,840	658,909	658,909	658,909	658,909
<b>Total Expenditures</b>	<b>21,962,498</b>	<b>22,281,093</b>	<b>22,418,258</b>	<b>23,023,820</b>	<b>22,971,011</b>	<b>23,284,084</b>

## General Fund

Division/Department	Current Budget 2008/09	Proposed Budget 2009/10	2010/11	2011/12	2012/13	2013/14
<b>Revenues</b>						
Taxes, Penalties & Interest	16,417,419	16,757,447	17,092,596	17,434,448	17,783,137	18,138,800
Interest from Investments	250,000	200,000	200,000	200,000	200,000	200,000
Intergovernmental Funding	7,500	7,500	-	-	-	-
Charges for Services	506,084	528,806	544,670	561,010	577,841	595,176
Miscellaneous	240,650	339,000	339,000	339,000	339,000	339,000
Support Fees	2,223,499	2,287,469	2,356,093	2,426,776	2,499,579	2,574,567
Other Finance Sources	1,190,000	130,000	-	-	-	-
<b>Total Revenues</b>	<u>20,835,152</u>	<u>20,250,222</u>	<u>20,532,359</u>	<u>20,961,234</u>	<u>21,399,557</u>	<u>21,847,542</u>
Beginning balance, Cash, July 1	<u>13,626,081</u>	<u>12,998,736</u>	<u>10,967,865</u>	<u>9,081,967</u>	<u>7,019,380</u>	<u>5,447,926</u>
Ending balance, Cash, June 30	<u>\$ 12,498,735</u>	<u>\$ 10,967,865</u>	<u>\$ 9,081,967</u>	<u>\$ 7,019,380</u>	<u>\$ 5,447,926</u>	<u>\$ 4,011,384</u>
Unrestricted	\$ 10,985,103	\$ 10,885,103	\$ 10,735,103	\$ 10,835,103	\$ 10,885,103	\$ 10,885,103
Maintenance & Operations	<u>2,098,923</u>	<u>82,762</u>	<u>(1,653,136)</u>	<u>(3,815,723)</u>	<u>(5,437,177)</u>	<u>(6,873,719)</u>
	<u>\$ 13,084,026</u>	<u>\$ 10,967,865</u>	<u>\$ 9,081,967</u>	<u>\$ 7,019,380</u>	<u>\$ 5,447,926</u>	<u>\$ 4,011,384</u>

**Assumptions**

Numbers include a 3.5% annual increase in personnel costs in future years.

Numbers include an annual increase of 2% in taxes collected.

## SARA Wastewater System Fund

Division/Departments	Current Budget	Proposed Budget	2010/11	2011/12	2012/13	2013/14
	2008/09	2009/10				
Other Financing Uses	\$ 534,800	\$ 2,672,080	\$ 500,000	\$ 500,000	\$ 500,000	\$ 500,000
<b>Operations:</b>						
Upper Martinez	2,893,414	3,027,869	3,061,102	3,095,498	3,131,098	3,167,944
Martinez II	3,364,091	3,597,190	3,649,422	3,703,482	3,759,434	3,817,344
Martinez III	47,283	37,046	37,192	37,344	37,500	37,662
Hwy 181 WWTP	65,999	48,696	49,366	50,060	50,778	51,522
Community Assistance	105,010	-	-	-	-	-
Reimbursements	(391,000)	(436,448)	(436,448)	(436,448)	(436,448)	(436,448)
less depreciation	(1,233,534)	(1,295,434)	(1,295,434)	(1,295,434)	(1,295,434)	(1,295,434)
<b>Total expenses</b>	<u>5,386,063</u>	<u>7,650,999</u>	<u>5,565,200</u>	<u>5,654,502</u>	<u>5,746,928</u>	<u>5,842,590</u>
<b>Income</b>						
Interest from Investments	\$ 150,000	\$ 106,000	\$ 106,000	\$ 106,000	\$ 106,000	\$ 106,000
Charges for Services	4,697,911	5,346,746	5,453,681	5,562,755	5,674,010	5,787,490
Miscellaneous	5,000	2,000	2,000	2,000	2,000	2,000
Support Fees	83,151	79,136	79,136	79,136	79,136	79,136
Other Financing Sources	292,928	383,658	100,000	100,000	100,000	100,000
<b>Total income</b>	5,228,990	5,917,540	5,740,817	5,849,891	5,961,146	6,074,626
Beginning balance, Cash, July 1	<u>4,881,837</u>	<u>4,724,764</u>	<u>2,991,305</u>	<u>3,166,922</u>	<u>3,362,310</u>	<u>3,576,528</u>
Ending balance, Cash, June 30	<u>\$ 4,724,764</u>	<u>\$ 2,991,305</u>	<u>\$ 3,166,922</u>	<u>\$ 3,362,310</u>	<u>\$ 3,576,528</u>	<u>\$ 3,808,564</u>

**Assumptions**

Numbers include a 3.5% annual increase in personnel costs in future years.

Numbers include an annual increase of 2% in wastewater rates.

## SARA Water System Fund

<u>Division/Departments</u>	<u>Current Budget 2008/09</u>	<u>Proposed Budget 2009/10</u>	<u>2010/11</u>	<u>2011/12</u>	<u>2012/13</u>	<u>2013/14</u>
<b>Operations:</b>						
Other Financing Uses	\$ 30,000	\$ 41,097	\$ 41,601	\$ 42,007	\$ 42,427	\$ 42,862
SARA Water System	208,476	236,581	240,048	243,635	247,349	251,192
less depreciation	<u>(26,362)</u>	<u>(33,626)</u>	<u>(34,803)</u>	<u>(36,021)</u>	<u>(37,281)</u>	<u>(38,587)</u>
<b>Total expenses</b>	<u>212,114</u>	<u>244,052</u>	<u>246,846</u>	<u>249,621</u>	<u>252,495</u>	<u>255,467</u>
<b>Income</b>						
Water Sales	192,230	243,243	250,540	258,056	265,798	273,772
Beginning balance, Cash, July 1	<u>2,307</u>	<u>(17,577)</u>	<u>(18,386)</u>	<u>(14,692)</u>	<u>(6,256)</u>	<u>7,047</u>
Ending balance, Cash, June 30	<u><u>\$ (17,577)</u></u>	<u><u>\$ (18,386)</u></u>	<u><u>\$ (14,692)</u></u>	<u><u>\$ (6,256)</u></u>	<u><u>\$ 7,047</u></u>	<u><u>\$ 25,352</u></u>

**Assumptions**

Numbers include a 3.5% annual increase in personnel costs in future years.

Numbers include an annual increase of 3% in water rates.

**Park Services Fund**

<u>Division/Departments</u>	<u>Current Budget 2008/09</u>	<u>Adpoted Budget 2009/10</u>	<u>2010/11</u>	<u>2011/12</u>	<u>2012/13</u>	<u>2013/14</u>
<b>Operations:</b>						
Braunig Lake Park	\$ 975,949	\$ 531,841	\$ -	\$ -	\$ -	\$ -
Calaveras Lake Park	930,029	550,768	-	-	-	-
Compensted Absences	-	28,100				
less depreciation	<u>(109,858)</u>	<u>(127,291)</u>	<u>-</u>	<u>-</u>	<u>-</u>	<u>-</u>
<b>Total expenses</b>	<u>1,796,120</u>	<u>983,418</u>	<u>-</u>	<u>-</u>	<u>-</u>	<u>-</u>
<b>Income</b>						
CPS Energy	257,646	151,711	-	-	-	-
Sales (Net)	1,274,042	606,046	-	-	-	-
Operating Transfer In - M&O Tax	<u>257,646</u>	<u>233,761</u>	<u>-</u>	<u>-</u>	<u>-</u>	<u>-</u>
<b>Total income</b>	1,789,334	991,518	-	-	-	-
Begining balance, Cash, July 1	<u>(1,314)</u>	<u>(8,100)</u>	<u>-</u>	<u>-</u>	<u>-</u>	<u>-</u>
Ending balance, Cash, June 30	<u><u>\$ (8,100)</u></u>	<u><u>\$ -</u></u>	<u><u>\$ -</u></u>	<u><u>\$ -</u></u>	<u><u>\$ -</u></u>	<u><u>\$ -</u></u>

**Assumptions**

Numbers include no longer operating the lake parks after December 31, 2009